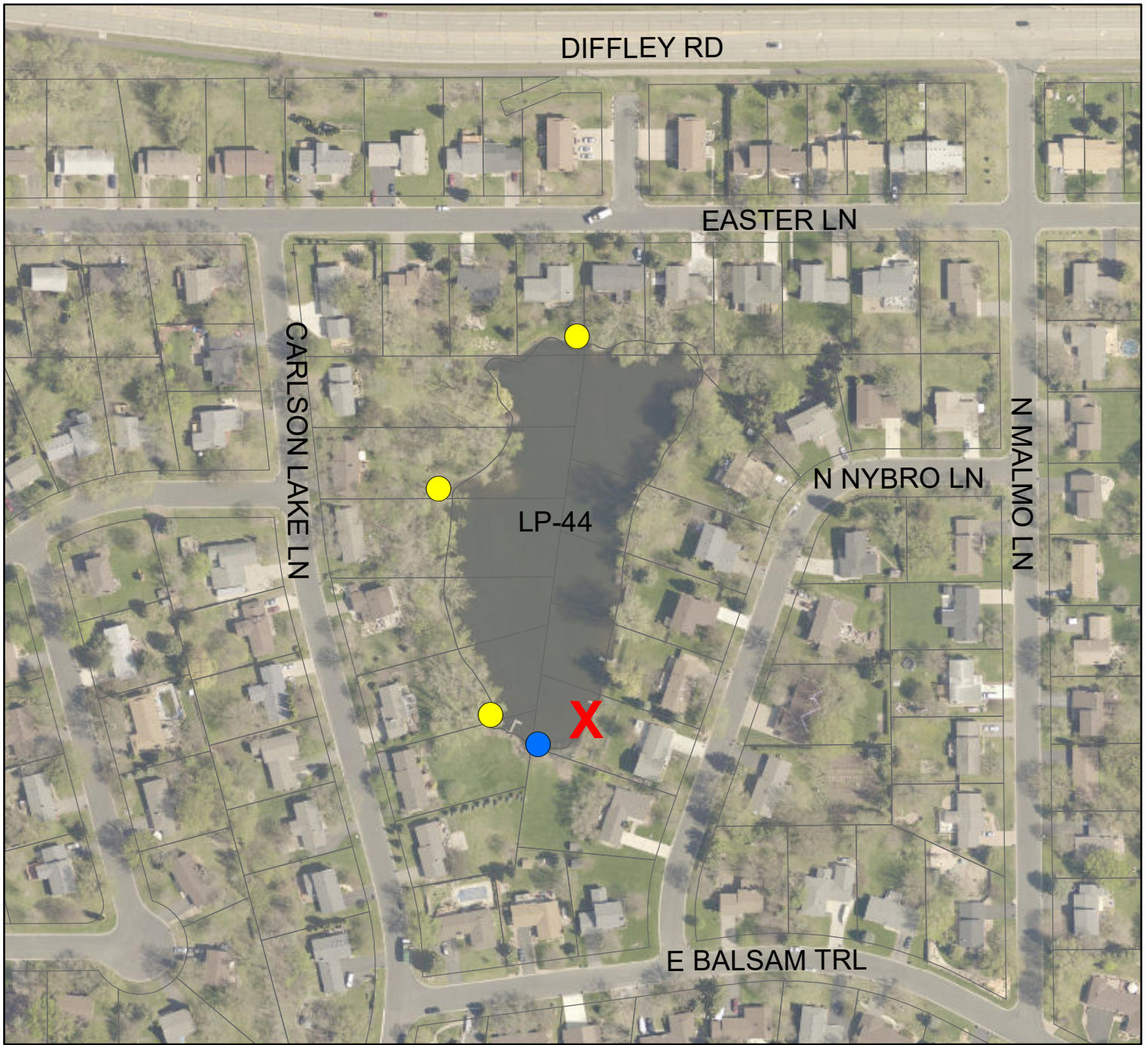

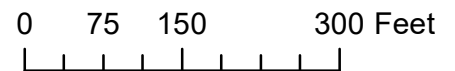


E-42 Pond "LP-44"



LEGEND

	Parcel Lines		Stormwater inlet
	Access location		Stormwater outlet



From Pilot Knob Rd and Diffley Rd, go east on Diffley and south on Malmö. Then turn right on N Nybro Ln. LP-44 is upstream of Carlson Lake, which is one of our waters impaired for total phosphorus. We have a friendly neighbor, Royce Tyre, who lives at 4265 N Nybro Ln and who has given us permission to access the pond through his yard. There are many fences so otherwise it might be difficult.