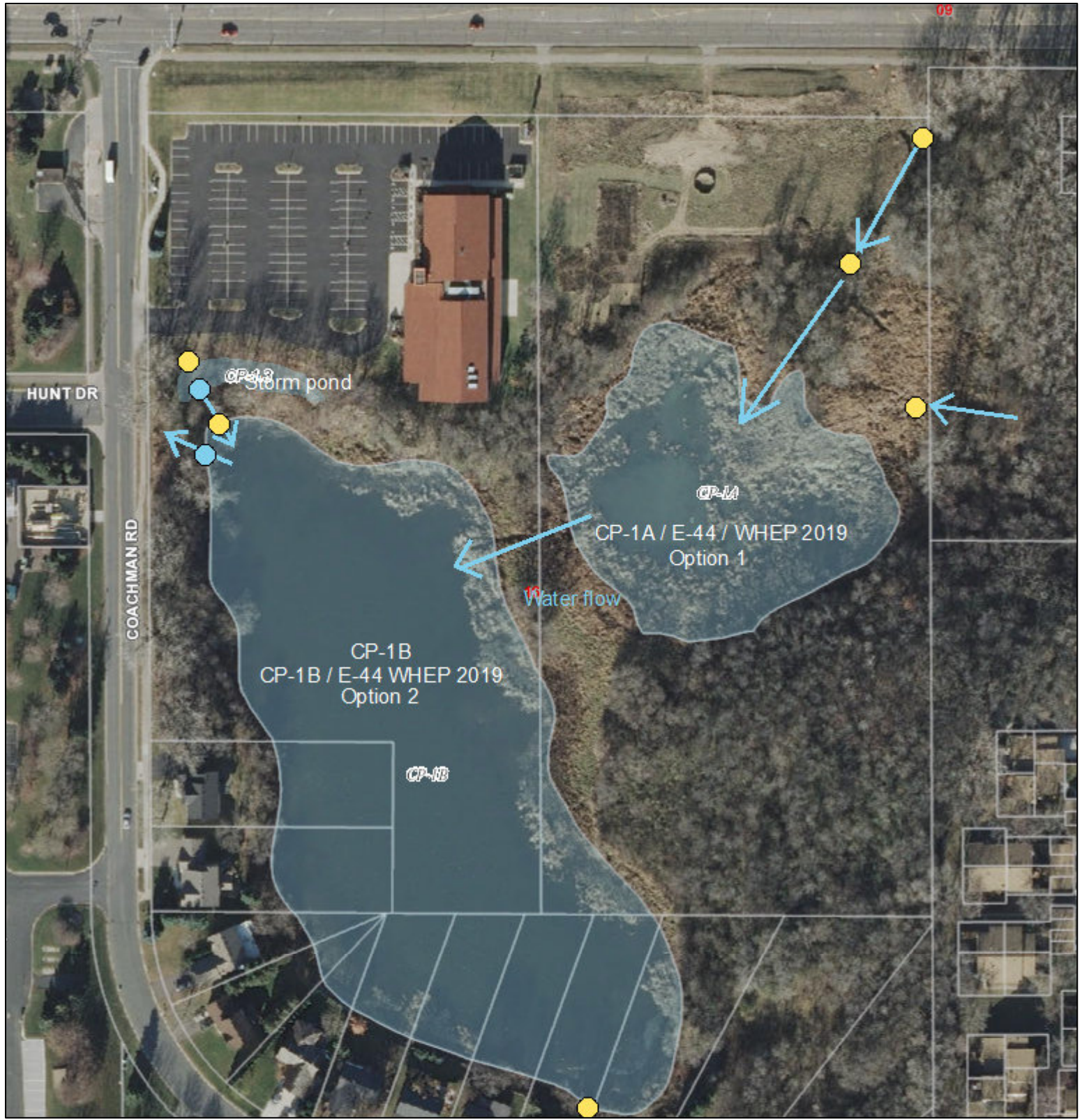


E-44 / Oak Hills Church Ponds N or S (choose one) / WHEP 2019



1 in = 188 ft



- Lakes
- Storm Basin
- Wetlands

Sections Numbers
Aerial Street Names

Park in lot at Oak Hills Church; walk to pond of choice. You may choose either CP-1A or CP-1B depending on available water level at the time.

Yellow dots are water inlets;
Blue dots are outlets.

This pond is near Eagan's Central maintenance facility.



City of Eagan_GIS
April 19, 2019

Map Powered by DataLink from WSB & Associates